



**iHISA** **Himalaya**  
International School

*Learners Today, Leaders Tomorrow*



## Director's



Mr. Ganesh Jahagirdar



Mr. Syd Kausar Syd Afsar



Prof. Ram abdar



Mr. Sattyanrayan lahoti



Prof. Arjun Bhosale



Mr. Mahadev Huljute



Mr. Sudhakar Jogdand

## Director's Message

- It gives us immense pleasure in welcoming you in Himalaya international school, Aurangabad. Directors of the school are leaders in education since 15 yrs.
- Socioeconomic development of every country depends on good leadership, proper planning, availability of energy, good health and educational standard.
- We believe in only quality education to face global challenges and to achieve golden opportunities. Quality is never an accident; it requires sincere effort and smart work.
- We are preparing students to get knowledge, application of knowledge and life skill.
- We believe in personality with human touch and global outlook of our student.
- We understand each learner's mind is unique and hence need to be nurtured with care.
- Every person requires two things for life; one is good health and second is success.
- We have intellectual power, to shape the glorious future of our students with innovative mindset.
- Be a part of Himalaya international school to shape the successful future of your child.
- We welcome you in Himalaya international school.

Thank You.



## Principal's Message.....

We nurture the passions and strengths of each child, to protect their emotional well being, to provide a secure and stimulating environment for personal and academic growth and to tailor learning goals to meet the unique sensory, social, emotional and academic needs of our students. We offer a wide range of hands on and meaningful learning experiences to stimulate the minds of our students and to foster the love of learning. Mind Up and social thinking curriculum are vital components to our school day as we teach and model mind and body awareness and demonstrate and reinforce effective and expected social skills and behavior.

Students will feel secure and valued at Himalaya International School because of the strong and positive connections they will have with their teachers and within their school community. Ideally, learning at the pre-primary stage should be an experiential, enjoyable experience. One that leaves a child with a lifelong love of learning and with the confidence that our pre-primary children gain in this nurturing environment, their transition to primary school becomes a smooth and happy progression.

I invite you to visit our school to be a part of our vibrant, positive and supportive environment. We welcome the opportunity to share our teaching values and philosophies with you and your family and we look forward to hearing your story and learning about your child's interests, passions, strengths and abilities.

Thank You.



## Why Himalaya ?

- We shape the students to learn with joy.
- We make the child to learn better from facilitative teaching than testing.
- We promote the child to learn apart from the regular traditional teaching methods.
- We are keeping the child in touch with their parents and teachers.
- We are going to develop the student along with our Indian culture.
- We induce the self-confidence and leadership qualities in the student.
- We are making the student so rich that he / she will not require any extra tuition at home.  
If necessary extra periods will be arranged in the school free of cost.
- School bus is provided for safety.



## About School....

### Curriculum

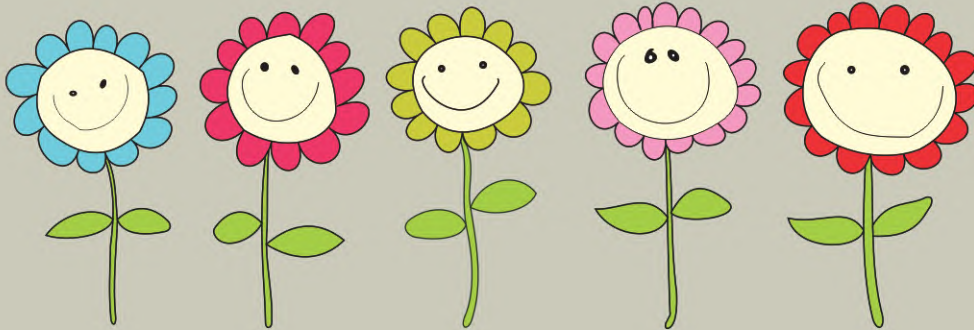
The curriculum of the school has been designed to promote the intellectual, social, physical and personal development. In addition to the formal teaching sessions in a day, it includes the hidden curriculum, the relationships and value evident in the ethos of the school.

In designing the curriculum of the school we have focused on age specific need of the children and in accordance with early childhood education policies of the government.

The curriculum activities that promote the emotional, moral, spiritual and social development along with intellectual development

### Syllabus

The school is going to fulfill the requirement of CBSE rules and norms to be affiliated.



## Faculty at the school

The staff is trained by authorized agency of CBSE.

All the faculties at school are trained and experienced.

They are expert in the implementation of the ideas we think.

## School timings

School hours for all students are  
from 9 am to 1 pm.





## Communication And Language (CL)

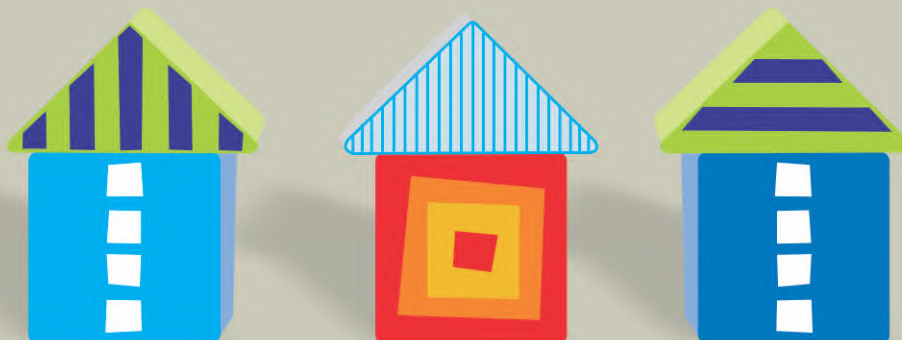
- CL is split into 3 sections: Listening and attention, Understanding and Speaking.
- At Himalaya the teachers include opportunities for children to:
- Take part in conversations (with adults and peers)
- Develop their vocabulary and understanding
- Use language in different situations such as imaginative play
- Listen to and share stories, poems and songs

## Physical Development (PD)

PD is split into 2 sections: Moving and Handling and Health and self-care.

Children at Himalaya are giving the opportunity to:

- Explore space around them, both indoors and outdoors
- Use a variety of movements (depending on age and stage) to move around the indoor and outdoor play areas
- Manipulate objects by pushing, pulling or pressing
- Use a variety of play equipment
- Develop fine and gross motor skills
- Understand the importance of hand washing
- Learn the importance of healthy eating and physical activity



## Admission Process

### Student Categories

Category	Age	Category	Age
Play Group	1.5+	LKG	3 & Half +
Nursery	2 & Half +	UKG	4 & Half +

For further details please contact the **School Office**

### Documents Required

- A Birth certificate as a proof of age from a civic body is required at the time of registration
- Four Passport size photographs are to be submitted at the time of registration.

In the record the groups are allocated based on age of the child and the age eligibility criteria and date of admission.

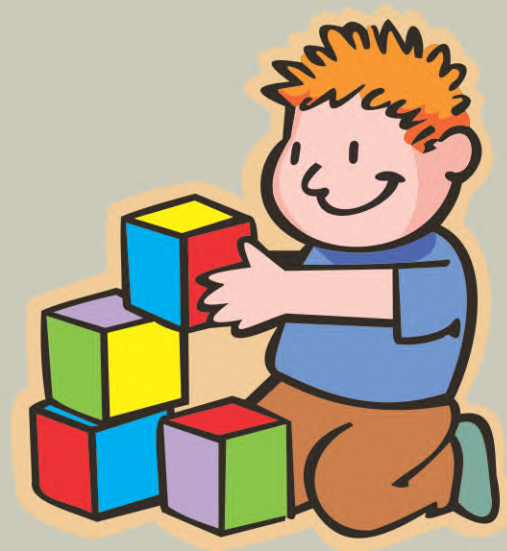
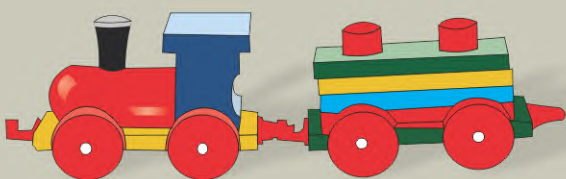
### Admission is granted on the basis of

First come first serve basis

The child shall be of 1.5 + years

Physically fit and mentally sound.

- The original / the true copy of the registered certificate must be produced and submitted with the admission form.
- No leaving certificate will be issued until all dues to the school have been paid.
- Behaviour of the pupil and parents should not be offensive, harmful and disturbing to the school atmosphere; otherwise the right of cancelation of admission is reserved to the principle.
- The school reserves the right to admit or reject any student with assigning any reason.
- The decision of principle shall be abiding and final.



## School rules

Parents should have to look after his / her pupil's dress, school diary and homework daily. Parents and pupil both are responsible for the good conduct with school and school management.

- The child must always wear a tag giving information about his/her name, class, address, telephone number and the bus stop.
- No child will be picked up from the bus stop unless he/she is wearing a tag. There must be someone to receive the child at the bus stop in the afternoon, failing which; the child will be brought back to the school. The child who has been brought back to school will have to be collected from the Reception.
- Please try to send the same person every day for those children who will be picked up by a servant or driver. They should reach school ten minutes before the bell.
- Identity card must be carried by the person who comes to pick up the child.
- The bag, napkin, water bottle etc. carried by the child, should have his/her name, class and section written on it. This is a must to avoid any loss.
- Any delay in picking up the child after the class timings should be informed to the office well in advance.
- Newsletters and assignments on topics are sent periodically. These should be preserved in folders for future reference. Parents are requested to go through these assignments along with their child for reinforcement of concepts introduced in the class.
- Parent Teacher Meetings are held for parents to interact with their ward's class teacher. Kindly make it convenient to attend. Prior information will be sent to you regarding the date and time.
- Please ensure that your child is not exposed to films which are not meant for his/her age group, especially those with violence as this has an adverse effect on the child.
- It would go a long way if parents could spend quality time with their child, reading out story books whenever possible.
- Please do not try to meet your ward's class teacher in the class during school hours. However you may meet her at 9:00 a.m. but only after taking a prior appointment.



## Hrcpl Education

An initiative by HR Consultants Pvt. Ltd - is a research based school education model consisting of contextual curriculum, sound pedagogies, effective school governance and teacher empowering mechanisms.

This Model ensures the achievement of development of:  
Human Values | Creativity | Excellence

This is an initiative by experts, India's only organization having NABET & CBSE credentials in the arena of School Education.

---

Legal Advisor

- **Mr. Deshmukh Nilkanth Vasant**  
(Rt. Dist. Judge)

---

School Committee

- **Dr. Ajit Thete**  
Deputy Secretary Tech. Education MH Govt.
- **Dr. M. D. Jahagirdar**  
Chairman- Ekata Pratishthan, Assessor NAAC ( Bangalore)

---

Health Care Committee

- **Dr. Shreekant Deshmukh**  
MD.DM, Neurologist
  - **Dr. Prajakta Deshmukh**  
D.C.H.
  - **Dr. A. A. Deshpande**  
Eye Specialist
  - **Dr. Kartik Raman**  
M.D.S. (Dentist)
-

## Location



**iHISA**

# Himalaya

International School

Guru Prasad Nagar, Beed Bypass Road,  
Aurangabad. - 431 210 (MS) India.

Email: [abdarram@yahoo.com](mailto:abdarram@yahoo.com)

Phone : +91 88057 01121/ 92714 74747